

SHEERING NEWS

also at www.sheering.org.uk

August 2024

149

SAVE YOUR VILLAGE HALL



TRUSTEES & VOLUNTEERS NEEDED

Without more help we could lose our village hall and all the classes, Pre-School, private functions and community events that benefit everyone in the Sheering Villages.


For a variety of personal reasons, a number of our trustees are leaving, and these positions need to be filled. In addition, we need more volunteers to help lighten the load on others.

The Village Hall Committee has engaged with residents via social media, leafletting households, and a public meeting on 3 July 2024 to encourage support and participation. The meeting was well attended, and we are grateful to those who offered volunteering support. Unfortunately, we still do not have enough people interested in taking on Trustee roles.

We are particularly keen to hear from residents in Lower Sheering who may like to be involved with the village hall, so that we can understand and facilitate the activities, courses and events that they would like to see at the hall and how we can best inform and share information.

The Committee invite you to another meeting on 14 August 2024 at 7.00 to encourage residents further and to explain the consequences and options available for the hall going forward.

A public vote will be held to determine next steps.

In This Edition		Summer Reading Challenge	19																																
Diary	3	HGGT New Travel Routes for Harlow	20																																
Autumn Allotments and Gardens Show	4	Community Speedwatch Volunteers needed	20																																
EFDC Play in the Park	4	Recycling & Waste	22																																
Parish Council Membership	5	Bishop Roger writes	23																																
Parish Council Chairman's Annual Report	6	Useful Information	Back Cover																																
First Job by Alan Salsbury	8	<div style="border: 2px dotted black; padding: 5px;"> <p>Please let us have letters, articles and photos for the next edition of Sheering News promptly by 1 November 2024.</p>  </div>																																	
Essex Police New Life Saving Kits	8																																		
Village Hall Report	9																																		
EFDC Lottery to support the Village Hall	9																																		
Sheering School News	10																																		
D Day Report	12																																		
Vacancies for Parish Councillors	13																																		
Coalbrookdale, Ironbridge - Adrienne Tinn	14																																		
Citizen & young Citizen of the Year awards	15																																		
Patient Participation Update Eden Surgery	15																																		
Bereavement Café	15	<div style="border: 1px solid black; padding: 5px;"> <p>We need deliverers for Sheering News in Lower Sheering! Please contact Iris Filisetti if you can help 07879 446459.</p> </div>																																	
WI; PTFA; Community Walk	16																																		
Friends of St Mary's	18																																		
		<table border="1"> <thead> <tr> <th colspan="2">Sheering Post Office Opening Hours</th> <th colspan="2">Shop Opening Hours</th> </tr> </thead> <tbody> <tr> <td>Monday</td> <td>9.00 - 17.30</td> <td>Monday</td> <td>6.30 - 19.30</td> </tr> <tr> <td>Tuesday</td> <td>9.00 - 17.30</td> <td>Tuesday</td> <td>6.30 - 19.30</td> </tr> <tr> <td>Wednesday</td> <td>9.00 - 13.00</td> <td>Wednesday</td> <td>6.30 - 19.30</td> </tr> <tr> <td>Thursday</td> <td>9.00 - 17.30</td> <td>Thursday</td> <td>6.30 - 19.30</td> </tr> <tr> <td>Friday</td> <td>9.00 - 17.30</td> <td>Friday</td> <td>6.30 - 19.30</td> </tr> <tr> <td>Saturday</td> <td>9.00 - 13.00</td> <td>Saturday</td> <td>6.30 - 19.30</td> </tr> <tr> <td></td> <td></td> <td>Sunday</td> <td>7.30 - 17.00</td> </tr> </tbody> </table>		Sheering Post Office Opening Hours		Shop Opening Hours		Monday	9.00 - 17.30	Monday	6.30 - 19.30	Tuesday	9.00 - 17.30	Tuesday	6.30 - 19.30	Wednesday	9.00 - 13.00	Wednesday	6.30 - 19.30	Thursday	9.00 - 17.30	Thursday	6.30 - 19.30	Friday	9.00 - 17.30	Friday	6.30 - 19.30	Saturday	9.00 - 13.00	Saturday	6.30 - 19.30			Sunday	7.30 - 17.00
Sheering Post Office Opening Hours		Shop Opening Hours																																	
Monday	9.00 - 17.30	Monday	6.30 - 19.30																																
Tuesday	9.00 - 17.30	Tuesday	6.30 - 19.30																																
Wednesday	9.00 - 13.00	Wednesday	6.30 - 19.30																																
Thursday	9.00 - 17.30	Thursday	6.30 - 19.30																																
Friday	9.00 - 17.30	Friday	6.30 - 19.30																																
Saturday	9.00 - 13.00	Saturday	6.30 - 19.30																																
		Sunday	7.30 - 17.00																																

APPLIANCE CARE

Repairs

DOMESTIC APPLIANCE REPAIRS

**ALL REPAIRS BY
FACTORY TRAINED ENGINEERS**

MOST MAKES COVERED



01279 451688

01279 437735

FIRST CLASS PRINTING AND FRAMING ...ON YOUR DOORSTEP!

Many of our customers travel miles for such high quality printing and framing services so you'll be pleased to know we're right on **your** doorstep. We offer friendly expert advice to locals and strangers alike and we'd be delighted to be of service.

SHEERING NEWS SPECIAL OFFER

20% DISCOUNT VOUCHER

For use against your first order as a new Menor customer

To receive your voucher visit www.menor.co.uk/sheering-offer
Not online? Simply bring this advert along to claim discount.



MENOR
PHOTOGRAPHIC AND FINE ART
PRINTING & FRAMING SPECIALISTS

Menor Ltd, The Mallings, Sawbridgeworth (easy car parking for locals)

PHONE: 01279 726214

www.menor.co.uk

DIARY**AUGUST**

Monday 5 Play in the Park. Sheering Recreation Ground 13:30 – 15:30 (see page 4)

Wednesday 7 Teddy Bears Picnic. The Gibberd Garden Marsh Lane, CM17 0NA 12.00 - 4.00. Children £2, Adults £5, face Painting £5

Wednesday 14 Save Our Village Hall. Open Meeting. Village Hall 7.00

Thursday 15 Play in the Park. Lower Sheering Playing Field 13.30 -15.30 (see page 4)

Wednesday 21 Parish Council meeting. Village Hall 7.30

Monday 26 Community Walk. Meet at the Village Hall 10.30

Saturday 31 Autumn Allotments and Gardens Show. Sawbridgeworth Memorial Hall

SEPTEMBER

Tuesday 10 WI. Village Hall 7.30 for 7.45

Wednesday 18 Parish Council meeting. Village Hall 7.30

Saturday 21 Harvest Festival St Mary's Sheering, Church open & stalls in Church Room 2.00 - 4.30

Sunday 22 Harvest Festival Service 10.30

OCTOBER

Sunday 6 'My Tutu went AWOL'. Friends of St Mary's talk followed by tea and cake/puddings. 3.00 St Mary's Church Room £10

Tuesday 8 WI. Village Hall 7.30 for 7.45

Wednesday 16 Parish Council meeting. Village Hall 7.30

NOVEMBER

Tuesday 12 WI. Village Hall 7.30 for 7.45

Wednesday 20 Parish Council meeting. Village Hall 7.30

DAILY**Pre-School - Every weekday**

Village Hall 8.30 - 2.30 during term time
Caroline Humphreys 07949 486093
sheeringvillagepreschool.co.uk

WEEKLY**Hub - Wednesdays**

Village Hall 2.30 - 4.30. All welcome

Youth Club Wednesdays Village Hall 4.00 - 6.00

Men's Shed Hatfield Heath

Friday 10.00 - 2.00;

Wednesday (March - October) 6.30 - 9.00;
First Saturday of the Month 10.00 - 1.00

Men's Shed Harlow -

Tuesday & Thursday 11.00 - 3.30

Men's Shed Bishop's Stortford -

Wednesday 10.00 - 4.00

Bridge Club - Thursdays Village Hall. 7.15

June Whitbread 01279 651234

Exercise Class - Mondays Village Hall 6.15 - 7.15

Natalie Green 07581 182036

All abilities welcome

Zumba - Tuesdays Village Hall 6.30 - 7.30

Claire Britten 07854 107021

Latin & Ballroom Dancing - Mondays

Village Hall Children 6.00 - 7.00;

Adult Improvers 7.00

Adult Beginners 7.45

Maxine 07854 251528

Yoga - Tuesdays Village Hall 9.15 - 10.15

Claudia mbmyoga.com 07914 040606

Yoga - Wednesdays Village Hall 6.00 - 7.00

Claudia mbmyoga.com 07914 040606

FORTNIGHTLY

Bereavement Café - First and third Tuesdays of each month Hailey Day Centre, Sawbridgeworth 2.00 - 4.00

THREE WEEKLY**Mobile Library Van - every third Wednesday** Sheering

Lower Road Layby 1.25 - 1.55

0845 603 7628 www.essex.gov.uk/libraries

MONTHLY

Bereavement Café United Reform Church Hatfield Heath. Second Wednesday of the month 11.00 - 12.30

Bug Hunt St Mary's Church Sheering 11.00

1st Saturday of the month

U3A - Sawbridgeworth third Friday of every month

3.00 Sawbridgeworth Memorial Hall.

Membership Secretary, John Dickenson

01279 722297

WI - second Tuesday of the month (except July, August & December) in the Village Hall at 7.30 for 7.45. You will be made very welcome whether you come along as a visitor or become a member.
Irene Harriss 01279 734334

**• New Builds****• Extensions****• Loft Conversions****• Refurbishments****• Conservatories****• Brickwork****• Driveways****• Patios****• Garage Conversions****• Groundworks**

**Small Enough to
Care**

**Large Enough to
Cope**

01279 792472

07946 617060

Free Estimates

All Work Guaranteed

Autumn Allotments and Gardens Show

An opportunity for you to start planning for the ever popular Sawbridgeworth Autumn Show on Saturday 31 August in Sawbridgeworth Memorial Hall.



There are a variety of sections to enter – vegetables, fruit, floral, preserves, handicraft plus many more; a prize for novices and a special section for children which is in age categories. This year's theme for the floral arrangement and photography section is Rings. There will also be scrumptious refreshments, an art exhibition plus much more to enjoy. Show schedules are being prepared so watch this space in the coming months, or if you currently need further information, please email Hazel Mead hazelmead404@btinternet.com or Irene Barnard ihbarnard37@gmail.com



FREE

All ages welcome. Children must be accompanied by an adult.
Play in the park is an inclusive session.

Play in the park is all about playing games and having fun outdoors. No need to book, just drop in at any time. The Play in the Park team bring a range of sports equipment and arts & crafts resources for children and their parents/carers to enjoy together. The team will be there to help organise activities and games all totally **free of charge!**

Sheering

Sheering Recreation Ground, The Street, Sheering CM22 7LX
Monday 5 August 13:30 – 15:30

Lower Sheering Playing Field, Sheering Lower Road CM21 9PS
Thursday 15 August 13:30 – 15:30

eppingforestdc.bookinglive.com

01992 564 226

[@efdcommunitieswellbeing](https://www.facebook.com/efdcommunitieswellbeing)
[@efdcommunity](https://www.instagram.com/efdcommunity)
 Epping Forest District Council

[What3words location finder](#)
 Sheering: [///polite.brand.term](#)
 Lower Sheering: [///windy.books.slower](#)

For a full list of Play in the park sessions scan me:

Blitz

CLEANING SERVICES

Oven Cleaning
Breathe life back into your kitchen with a professional oven clean.

Window Cleaning
Outstanding window cleaning solutions throughout Essex. Book today.

House Cleaning
Take the pain out of cleaning your house with scheduled cleans from Blitz.

- ✓ Carpet Cleaning
- ✓ Upholstery Cleaning
- ✓ Soffit & Fascia Cleaning
- ✓ Driveway / Patio Cleaning
- ✓ Deep /One Off Cleaning
- ✓ Roof Cleaning
- ✓ Conservatory Cleaning
- ✓ Gutter Cleaning & Repairs

BOOK NOW!

0800 112 3337

309 BROCKLES MEAD, HARLOW, ESSEX, CM19 4QD

www.blitzblitzblitz.co.uk

Christopher

THE LOCKSMITH

ARE YOUR LOCKS BEHAVING BADLY?

We Value Old Fashioned Customer Service
A Local Trusted Family Business Since 1989

- Specialist in UPVC & Wooden Doors
- No Call Out Charge
- No Fix No Fee
- All Work Fully Guaranteed
- 10% Senior Citizen Discount

For More Advice & Help Call Christopher:

07772 111 222

www.christopherthelocksmith.co.uk

Sheering Parish Council

All members of the public are entitled to attend the meeting and are cordially invited by the Council to do so. Time will be set aside prior to the published agenda to enable informal discussion to take place.

For dates of meetings please refer to the Parish Council website sheeringparishcouncil.gov.uk



Parish Councillors

Lesley Paine Chairman	CllrL.Paine@sheeringparishcouncil.gov.uk	SV
Mike Achilles - Vice Chairman	CllrM.Achilles@sheeringparishcouncil.gov.uk	LS
S Badcock	CllrS.Badcock@sheeringparishcouncil.gov.uk	LS
Bill Bedford	CllrB.Bedford@sheeringparishcouncil.gov.uk	LS
Mick Bull	CllrM.Bull@sheeringparishcouncil.gov.uk	SV
Neil Marsden	CllrN.Marsden@sheeringparishcouncil.gov.uk	SV
Richard Morgan	CllrR.Morgan@sheeringparishcouncil.gov.uk	SV
Peter Rust	CllrP.Rust@sheeringparishcouncil.gov.uk	LS
Phil Tansey	CllrP.Tansey@sheeringparishcouncil.gov.uk	LS

Or contact the Clerk who will forward your messages to the appropriate councillor

Clerk to the Parish Council

Siobhan Perrin
07821 894235 **Office hours only**
clerk@sheeringparishcouncil.gov.uk

District Councillors (Rural East)

Richard Morgan	clrr.morgan@eppingforestdc.gov.uk 01279 731243 / 07949 486093
Raymond Balcombe	cldr.rbalcombe@eppingforestdc.gov.uk
Ian Hadley	cldr.ihadley@eppingforestdc.gov.uk

County Councillor

Christopher Whitbread cldr.christopher.whitbread@essex.gov.uk
Essex County Council, County Hall, Duke Street, Chelmsford CM1 1LX



**SHEERING VILLAGE
PRE-SCHOOL**
Meet in the Village Hall
Monday to Friday
9.00 - 12.00
Interested? Please ring
Caroline Humphreys
07949 486093

Leonard Joscelyn for Personal Tailoring



Formerly of Tissimans

- Look smart and feel comfortable
- Made to your own specification
- Fitting at home or place of work
- Fabrics from British and Italian Mills
- 40 years experience in fashion design

01279 304181 07733 028099
enquiries@leonardjoscelyn.co.uk
leonardjoscelyn.co.uk

Parish Council Chairman's Annual Report (Given at The Annual Parish Meeting)

As the district councillor for Lower Sheering and the Chair of the Parish Council, the past year has been a journey filled with challenges, achievements, and a deepening understanding of the intricacies of local governance. Whilst the Parish Council tirelessly advocate for our community's needs, it's evident that significant resources and decision-making authority reside with the County Council and all we can do to solve our major issues in Sheering is to lobby our County Councillor for financial backing and assistance, whether it's potholes, traffic and speeding, pavement repairs, tree maintenance or road flooding. We have been fortunate to enlist help at Epping Forest District Council with the very serious flooding issues in Lower Sheering but note that these are ongoing with the more serious discovery of a sewage leak adjacent to The Meadows with the potential for many weeks of tankers replacing the pumped sewer which had burst. Cllr Mike Achilles has been negotiating with Network rail for over a year to get the culvert below the railway cleared but has been frustrated by their defensive approach.

As a Parish Council, it is our duty to maintain our War Memorial which has been renovated this year and will be re-dedicated on 8th June. We obtained planning permission to renew the surrounding wall but need to discharge the conditions on the materials.

After the rededication of the War Memorial on June 8 we will be holding a tea dance in the Village Hall when we will also have the fairground on the recreation area and representation from the new youth club which started some months ago in the village hall with the assistance of Sally Devine our Community Champion. We have continued to discuss the matter of speeding with Essex Highways but were shocked to find that HGVs should not have been using Ealing Bridge since 2010 when a conditions survey suggested limiting the size of vehicles to 10T. Most HGVs avoid using the bridge, but we still have odd vehicles passing across during the day. We will continue to engage with Essex Highways for updates on their proposals on speeding and restrictions.

The Parish Council voted and agreed to install a disabled toilet in the village hall to make our local facility more accessible. We are in the process of preparing drawings and specification to install 4 new toilets in the old doctor's room and replacing the gent's toilet with a disabled facility thereby facilitating separate facilities for the preschool during the

day so the small hall can be used by the community all day when the large hall is in use. The Parish Council is committed to enhancing communities' infrastructure and amenities and you may have noticed that the playground in Sheering Village has had new safety surfaces installed and the multiplay unit painted and refurbished. Cllr Steve Badcock has been carrying out weekly inspections of the Lower Sheering playground and it has been noted that people are walking their dogs there and not clearing up after them leaving a health hazard. We are therefore considering installation of a fence to separate the small, grassed area on Sheering Lower Road from the playground to restrict dog walking away from areas where children play. This stands as a testament to our commitment to providing safe recreational spaces for children and our attention to community needs for dog walkers. In Sheering Village, we still have the issue of parking adjacent to the village hall by local residents throughout the day and night and this poses logistical inconveniences for users of the hall and recreational ground. The Parish Council are exploring solutions such as employing parking management services which reflects our proactive approach to addressing community needs. To ensure our commitment to preserving community spaces and amenities, we have set up a maintenance regime for the assets and trees that the Parish Council own. This year we had the trees inspected, then cut and shaped to ensure that they are kept in good health. We hired a pressure washer a few weeks ago and cleaned benches, bus stops, play equipment and the surround wall to the War Memorial. During this last year we have seen the launch of a new website sheeringparishcouncil.gov.uk which gives detailed information on minutes and agendas plus vital information for the public. We also have a Facebook page to advertise information. Our accounts are in excellent order and monies sorted into various earmarked accounts for use on future projects including the wall surrounding the War Memorial and the village hall toilets. Money is also available to install the fence in the Lower Sheering playground.

Most of all I must thank our clerk Siobhan Perrin for her organisational skills, but more for her calming influence when times are difficult. We now have everything under tight control due to her diligence and hard work so we are prepared to face another year shaping our community.

Lesley Paine
8 May 2024

Why Play Bridge!

It needs little knowledge to begin playing and enjoying the game at a basic level and can be played at any age. Every hand is different, providing endless variety and challenge. It's exciting, interesting, stimulating and there is always something to learn but above all it's fun and there will be laughter!



Research has shown that regular bridge playing improves reasoning skills and long- and short-term memory. It challenges the brain with complex strategies and problem solving - a great way to exercise the brain and can help older people retain their mental sharpness.

You will meet new friends of similar interests! A game of bridge involves communication and cooperation with your partner and interaction with your opponents. There's a special camaraderie that develops among bridge players and many groups and clubs of all levels in the area to hone your skills, or just play socially with friends – all you need is a pack of cards!



Have I convinced you to give it a try?

Join my course for complete beginners starting 2 September.

For further details contact Sue on 07765 256567
sue.lake@sky.com

Food Intolerance & Allergy Testing Services

INNER HEALTH

Teresa Powell

07961 544534

teresapowelluk@yahoo.co.uk

Safe & non-invasive

Sheering Church of England Primary School *Feeder School for Leventhorpe and Mark Hall* **WE ARE YOUR LOCAL SCHOOL**



Sheering School is a vibrant and exciting learning community. We take pride in our family feel and strong links with the local community.



Why not come and have a look at what's going on in our school?

Please ring the school office for a prospectus or to arrange a visit

01279 734210

admin@sheering.essex.sch.uk www.sheeringschool.org.uk

CHIROPODIST

Mrs Julie Golden

HCPCRegistered
(State Registered)

Home Visiting Practice

Est. 1994

01279 873492
07916 075451

JOHN MILES & SON

Tyre & Exhaust Centre

BRAKE PADS*TYRES*BATTERIES
EXHAUSTS* WHEEL BALANCING
WHEEL ALIGNMENT
PUNCTURES

01279 726211

Mon-Fri 8.30 to 5.30 Sat 8.30 to 12.00

Unit 2 The Maltings Station Road Sawbridgeworth Herts

First Job by Alan Salasbury

(Continued from last edition)

After working for Sainsbury's for 3 months, I had progressed and was now a second-grade apprentice in the bacon department. One of my duties was to clean the enormous bacon slicer, which was red and stainless steel with a huge frightening blade. You had to put the solid piece of bacon



into the grip and then turn the wheel, having already adjusted the width. As the wheel turned, the platform went back and forth and, on each turn, it got nearer to the blade. The bacon would reach the blade and a perfectly cut slice would come off, which you caught in your left hand. To clean the machine, you would dismantle the whole apparatus, wash it in hot water and soda crystals and reassemble. The very last job was to sharpen the blade with a sharpening stone and then clean it. The manager was a very pompous man who rarely served in the shop. The exception was when an attractive middle-class lady with a cultured accent came in. Then the manager would fly out of his office and push whoever was serving to one side. On one such occasion, and with a grimacing smile he said, "Can I help you madam?" "Yes, I would like a large Gammon steak for my husband's dinner". "Very good madam, I will go and find you the best in the store." He went out to the cold store and returned with a fresh Gammon which he presented to her. "Oh yes that would do nicely"

He started to mount it on to the slicing machine which I had just finished sharpening. I tried to stop him, but he wouldn't listen. Then, beaming at the lady, he started turning the big wheel and I watched in horror as the bacon met the blade and a huge gammon steak, the most expensive thing in the shop, fell into his hand. He presented it to the customer with a grand flourish and she recoiled in horror. "I couldn't give my husband that!" The manager looked at the steak and saw that it was covered in grease and metals filings. He looked at me with his face going beetroot. I had tried to warn him that I had just sharpened the blade and had not yet cleaned it but he wouldn't listen. He cut her a slice with a knife apologising profusely and then stormed off into his office. Later my supervisor came and tore me off a strip, but it was worth it just to see the manager's face.

Life-saving bleed prevention kits rolled out across the force



Frontline officers are now equipped with specialist bleed prevention kits that will help them give injured people better emergency care.

Our officers are frequently first on the scene of accidents or incidents where a person may have suffered a laceration or wound that needs urgent medical attention.

The bleed kits - containing a trauma dressing, a chest seal, a pack bandage, a tourniquet, gloves, scissors, a foil blanket, and a mouthguard for giving CPR - give officers the tools they need to treat injuries and prevent people from entering hypovolemic shock or even dying from blood loss.

So far, there have been 278 kits issued to teams across the force, supplementing their existing first aid packs.

Apton Dance Studio Latin & Ballroom Classes In Sheering Village Hall



Children's Latin & Street Dance Age 7+
Mondays 6.00 - 7.00 £8 per session

Adult Improvers Mondays 7.00 £8 per session

Adult Beginners Mondays 7.45 £8 per session

Starting 9 September 2024

Contact Maxine 07845 251528

aptondancestudio.co.uk

Other venues & times; styles & ages see website

Private lessons available

Annual events - Corby Dance Weekend

Big Band Dance; Practice Nights; Dinner Dances;

Dance Cruise Breaks

Village Hall Report

The village hall committee continue to work hard to manage and maintain the hall for regular hirers and ad hoc events. We have also held several community events and fundraising activities.

In April we hosted an all-day 'Stay Safe and Well this Spring' event with Epping Forest District Council. This was free to attend and included speakers and third-party providers across Essex giving talks, demonstrations and a drama performance on a wide range of interesting topics to help our residents be mentally and physically safe and well, including protection from scamming.

We have also introduced a weekly Youth Club for 11–19 year-olds that runs every Wednesday 4.00 - 6.00. It is well attended, and our young people participate in a whole range of activities including arts, crafts, cooking and sporting activities. It is run by Zinc Arts, but the activities are led by the attendees, so it is tailored to what they would like to do. It is completely free and everyone within the age group is welcome to attend. Just turn up and try it out!

We have hosted a maths course to help parents and carers support their children with simple maths as they enter primary school. If there is interest, we can host additional courses that cover Key Stage 1 and Key Stage 2 maths. We know that the way our children learn maths skills can be very different to how we were taught at school. These courses are really useful to help parents and carers understand the current way of teaching so they can support their children at home using the

same techniques as their school. If this is of interest, please email Sally Devine (sally.devine1@gmail.com) for more information

We also hosted a three week art project which was very successful, and most recently a cookery workshop where attendees have made nutritious meals on a low budget, including soups and homemade bread and have carried out taste comparisons of well-known brand foods to demonstrate price is not necessarily a good indicator of taste and quality. Everyone had fun and learnt something useful. If you fancy getting involved, please contact Sally Devine (sally.devine1@gmail.com)

Our Community Social Hub continues every Wednesday afternoon 2:30-4:30. Everyone is very welcome. Tea, coffee and cakes are provided in a very relaxed and friendly space for chatting with old and new friends.

The D-day celebration on 8 June was held in the Hall and on the Rec and was enjoyed by all those who attended. Very many thanks to the Parish Council for organising this event. And thank you to everyone who supported our Village Hall Raffle which raised £136 towards the renovation project.

As you will be aware, on the front page of this Sheering News Edition, the Committee desperately needs more committee members and volunteers to come forward. The running of the village hall is unsustainable without additional support. We run the risk of losing the hall and all the activities and events that it offers unless we get enough additional help. We have an Open Meeting on 14 August in the Village Hall

at 7.00 and encourage residents to attend. A decision about the future of the hall will be taken.

In the meantime, PLEASE contact a committee member or email sheeringvh@outlook.com if you are interested in being a new committee member or volunteer.

Sally Devine
Village Hall chair

WE'VE LAUNCHED OUR LOTTERY

- Tickets cost just £1 a week
- Help give our fundraising a boost
- Win up to £25,000

PLAY NOW:
SCAN THE QR CODE OR GO TO
www.eppingforestcommunitylottery.co.uk
AND SEARCH FOR SheeringVillageHall

Please take part in the Epping Forest District Council Lottery

Top prize £25,000
From every £1 ticket sold 50p will go to **your chosen good cause - the Village Hall.**

We need your help so that we can carry out much needed repairs and improvements to the hall.. This will allow us to continue to offer and even expand our facility!

Simply go to **eppingforestcommunitylottery.co.uk** and search for Sheering Village Hall as your good cause. Select your numbers and pay £1 per week

Thank you for your support and good luck!

Sheering School News

This time last year we said goodbye to several members of staff. However, our new staff have settled in really quickly; the children have been engaged well in their learning and behaviour has been very good.

Our PTFA have continued to be a great support to the school in raising funds in more exciting and creative ways such as the Christmas Fair (where the prizes were amazing), the sponsored bounce, Mothers' Day gift shop and a Valentine's disco. Some of the ways the raised money has been used: to support our reading scheme, for classroom resources, the playground markings and we are planning to have some new play equipment installed on the back field.

Just before half term, Quickbury class (Year 5/6) went on their residential trip to Lincolnshire for 3 days. The activities included raft building, zip wire and fencing. The trip away provided the opportunity for the children to enjoy taking risks and build resilience which has been something that the school has been working hard to promote since the return to school from the Covid lockdown.



Our planned summer events to look forward to are the PTFA Summer Fair, sports day, Enterprise Week and the end of year production. We are also looking forward to welcoming our new children who will be joining us in Reception when we have our transition days.

We have continued to develop our curriculum and have been receiving some support in doing this from the DfE. We are also in the process of developing our 'Everyone Matters' strategy which will encourage engagement with the Sheering community as we used to have before Covid. We look forward to having more open days, reading sessions and coffee mornings, etc. with you soon.

Unfortunately, and not for the first time there has been a near miss due to dangerous driving along The Street. On this occasion a vehicle which was travelling at speed overtook one of the dust carts and narrowly missed hitting a child outside the school. This incident was reported to the police. The speed of the traffic is far too fast. The school, parents and residents are concerned that if something is not done there will be a serious accident.

Lorna Brittain Head Teacher



Pike's Plumbing & Heating



If you're looking for a plumber or heating engineer, Pike's Plumbing & Heating can help.

Whether it's an emergency, simple problem or you're just thinking about installing a new washing machine, bathroom or gas heating system give me a call – I'm available when you need me 24/7.

No Call-Out Charges & Free Quotations

Mobile: **07889 140035**

Email: info@pikesph.co.uk

Web: www.pikesph.co.uk

Craig Pike - Owner

Property Maintenance Heating
Electrics Bathrooms Plumbing



The Cock Inn Sheering

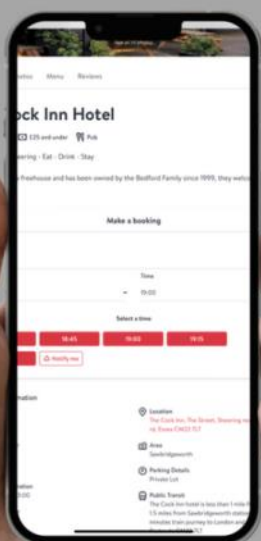


All Restaurant and hotel bookings
can now be booked direct through



our website!

www.thecockinnsheering.co.uk



EASY ONLINE
BOOKING

We are now live on Opentable!
Go direct to our website to secure
your reservations!

BOOK NOW

FOOD SERVED

*Two course
Lunch specials
Monday to Saturday*

*Sunday
Roast*

www.thecockinnsheering.co.uk

D Day

Residents of Sheering commemorated the 80th Anniversary of D-Day with a service led by Rev. Dawn Jewson, honouring those named on the War Memorial. The event included a rededication of the recently cleaned structure.



Community members laid wreaths to remember those lost in war, with personal reasons for revering loved ones or remembering their own military service. Phil Tansey, in his Air Force reservist uniform, symbolized the young men from the village who once marched off to war, reminding all of the hope and expectation of those days, and the determination that such conflict is never repeated.

Representatives laid wreaths as follows: Army: Jean Wybrew; Navy: Pat Woolgrove; RAF: Chris Harriss; WI: Irene Harriss; Church: Elsie Baker; Nurses: Pat Flood; School: Local children; Parish Council: Phil Tansey.



An afternoon tea dance was organized, with tables representing the five beaches of the Normandy landings: Omaha, Utah, Sword, Gold, and Juno.

Little cakes with flags of the participating countries



The Village Hall displayed memorabilia, bunting, and propaganda from the 1940s.



adorned the tables, and 1940s music encouraged residents in period costumes to dance quicksteps, foxtrots, and jives. The sight of residents dancing and enjoying the festivities brought great joy and laughter.

Outside, inflatables entertained children, while a



BBQ and bar catered to the adults. The WI set up a NAAFI in the small hall, serving refreshments during the events on the recreation ground. Their efforts raised £100 for the armed forces charity, SSAFA.

SHEERING PARISH COUNCIL

Parish Councillors Needed

We have space for 3 more Parish Councillors for Sheering Parish Council, so if you think you could make a difference to your community or bring some new ideas to the table, please come and join us.

Get involved and help to drive the changes to make your community better!



INTERESTED?

For more information
Contact the Clerk

clerk@sheeringparishcouncil.gov.uk

Dri-Line Services

Home delivery of Incontinence Products

- Complete range of Incontinence Products Available
- Free delivery on all orders
- Multipack discounted prices on all products
- Mature, experienced and helpful delivery driver
- Friendly telephone assistance and advice
- Pay by card over the phone or cash/cheque on delivery
- Order what you need, when you need it

CALL NOW FOR A COPY OF OUR FREE CATALOGUE

01279 912008



You phone - we deliver

Dri-Line Services have been delivering a complete range of incontinence products to people's homes for the last 31 years.

PLANS

Planning and Building Regulations Applications



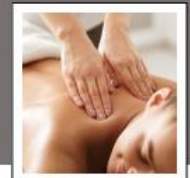
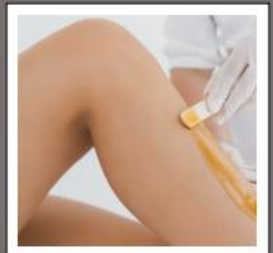
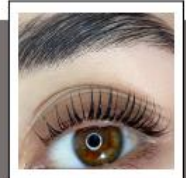
07774 281115 or 01279 731770
plan.services@me.com

EXTENSIONS CONVERSIONS NEW BUILDINGS



ESCAPE LASER LOUNGE

WWW.ESCAPELASERLOUNGE.COM



LASER CLINIC BASED IN
HATFIELD HEATH, ESSEX

- Elyson Diode Laser Hair Removal.
- **Fantastic Results in just 6 treatments.**
- Permanent and Safe.
- **Treats all areas of the face and body.**
- Treats all skin types I to IV.
- **Treats all hair colours (excl. white/ grey)**
- No more shaving or waxing.



SCAN FOR PRICE LIST

E. SBURGESS.ESCAPE@GMAIL.COM

T. 07740 433 417



Coalbrookdale, Ironbridge

A metal man-made monster
 Reflects the overcast sky
 Straddling the giant gorge
 Shadows delve into the depths
 Of sluggish brown waters
 Uninviting to the eye
 The present scene is lit by brightly clad birds
 Perched on the river bank
 Learning of the past -
 As did rich tourists centuries gone by

This is Coalbrookdale
 Home to a revolution
 Where dressed in their finery
 The gentry came
 Parasols aloft top hats on
 To watch in amazement and awe
 The new-made furnaces
 Blast their fiery flames into the sky
 Smelting the iron ore
 The day turned into smoke of black and white
 The night a sulphurous hell burning bright
 Varied shades of purple and of red

Close to, unbearable stench
 Impossible to stand
 This Gehenna home of the living dead
 Where ashes fell to litter a once green land
 This the place that forged the iron bridge
 That changed the course of history
 And altered people's lives
 From countryside to factory and mill
 And back
 And all the forges now are lying still

Adrienne Tinn

C. J. A. Upholstery

Stylish and contemporary pieces of furniture
 individually crafted to fit perfectly to any
 space & lifetime guaranteed.

Complement your furniture with stunning
 Fabric, thousands of fabrics to choose from.



Quality furniture - Made
 to last a lifetime

28 years at Omega Furniture

Why buy new furniture when we
 can re-upholster your existing
 piece?



With more than 35 years
 experience, CJA Upholstery is a small friendly business who
 provide a comprehensive range of upholstery services to
 clients in Essex and Hertfordshire.

Check out our reviews at check-a-trade.com

01992 893 964 07904 359 333

Northam, 45 North Street, Nazeing, Essex, EN9 2NH

www.cjaupholstery.co.uk



the i practice

Optometrists and
 Contact Lens Practitioners

Eye care for all the family.

NHS and Private Examination

enquiries@theipractice.co.uk

01279 725332

47 Knight Street, Sawbridgeworth
 Herts CM21 9AX

www.theipractice.co.uk

Citizen & Young Citizen of the Year awards

This year the Young Citizen of the Year Award was presented to two winners, Phoebe Parker and Fay Alderman. Both girls are doing very well academically and are making a difference to the wider school community in the way they help and support others.



The winner of the Citizen of the Year award goes to Ann Andrews for her 35 plus years



of service to the village as a member of the village hall committee. Ann continues to support the Village Hall by frequently baking cakes and helping at the weekly community hub.

Eden Surgeries Patient Participation Group (PPG) update

Having re-formed in September 2022 to help advise and guide the practice through the difficult period after lockdown restrictions were lifted, the PPG meets with the Eden team every 8 weeks to share views on the issues that affect the patient population.

At each meeting we raise a main subject for discussion, and at our meeting in March the discussion was centred on the role of the Eden Reception team, represented by Lucy (Deputy Practice Manager) and Donna (Lead receptionist).

They gave an outline of a typical day as a receptionist and the challenges that it raises, and how the operational changes that the Practice has adopted recently have improved ways of working.

Lucy and Donna also shared the latest monthly performance stats that showed monthly bookable appointments for March at 3,700, which is a consistent monthly figure. Also the DNA (Did Not Attend) stats that have shown a notable decrease over the last 9 months, but still represent approximately 20 hours of lost appointment time each month.

There was also an update on the new NHS Pharmacy First Scheme. Pharmacy First will enable community pharmacists to supply prescription-only medicines, including antibiotics and antivirals where clinically appropriate, to treat several common health conditions without the need to visit a GP.

This in turn should ease the pressure on the surgery to provide same day appointments relating to easily treatable conditions.

Finally, Eden is looking to spruce up its Hatfield Heath reception and waiting area with new seating and flooring over the next few months, and improved information screens in both surgeries.

If you wish to read all the minutes from the PPG minutes please head to

www.edensurgeries.co.uk and click on our patient group. You will also find details if you would like to join the Patient Group.

The Eden Surgeries PPG

Bereavement



Meet and connect with others who understand

- ★ A safe space if you have experienced loss
- Chat, share and support each other
- Facilitated by trained volunteers
- Everyone is welcome and it's free to attend

Where? United Reform Church
Chelmsford road, Hatfield Heath
CM22 7BH

When? Second Wednesday of the month

Time? 11am - 12.30pm

For more information, please get in touch by calling
GriefLine on 01279 945089

stclarehospice.org.uk
Registered Charity No. 1063521

Find your local officer, get the latest crime statistics and advice, help us with appeals for information and find out what we're doing to tackle crime in your area.



essex.police.uk/

LOCAL ORGANISATIONS

WI

Following our AGM we retained our existing officers and committee, so we now look forward to the rest of the year.



Our outing to a garden centre wasn't possible but we did get to visit the Air Ambulance site at North Weald. This was a very informative and enjoyable visit where we were made very welcome by the staff, well worth a visit if you get a chance. This was followed by a lunch at the Rosey Lea cafe on the airfield.

Our participation in the D-Day celebration has enabled us to send a significant donation to the forces SAFA charity. A very pleasant

afternoon it turned out to be. We're now planning our summer lunch at the church room, where we hope to sit under the tree to eat whilst being serenaded by St Mary's Brass.

Along with interesting speakers our meetings are well worth a visit. We're a friendly bunch who will make you most welcome.

Second Tuesday of the month in the small village hall at 7-30.

Sheena Pike President

Sheering School PTFA

The second half of the school year has been a busy one! Sheering School Christmas Fair was held in the Village Hall, and we were delighted with the support from the village as many people came to browse the stalls, share a mulled wine,

buy a raffle ticket, and get in the festive spirit. Thank you, Father Christmas, for also joining us! We were thrilled to raise over £1300 with an extra £451 from Laura Marcou's employer as match funding.

The early years outside space received a wonderful revamp over Easter with the support of PTFA volunteers rolling up their sleeves to clean, tidy, build, paint and give our younger pupils a lovely outside space to play and learn. Huge thanks go to Wickes Harlow for donating timber for the mud kitchen, local carpenter Daniel Burnett (DJB Carpentry 07732 340134) who built the mud kitchen and Handyman Bill (Leia and Sienna's Grandad) for all his hard work supporting the project. The children have enjoyed a sponsored bounce, break

Dirty Carpets & Upholstery?

**For excellent cleaning results
and fast drying times**

Call
MAGIC STEAM
01279 466359

We offer a free friendly estimate

**We are a local company, trading
for over 22 years in this area**

**See our superb feedback on
Checktrade:**

www.checktrade.com/MagicSteam/eviews.aspx

Chase Decorations Ltd

- ✓ Interior & Exterior
- ✓ Dust free sanding
- ✓ Wallpapering
- ✓ Low odour
non-toxic paints
- ✓ Kitchen & bedroom
units repainted

01279 420048
07973 907586

www.chasedecorations.co.uk
info@chasedecorations.co.uk

the rules day and both Mother and Father's Day Shops all hosted by the PTFA. Our Summer Disco will be held on 12th July after school, where there will be music, BBQ, bar, raffle, and inflatables and hopefully a sunny evening for all to enjoy.

The PTFA have contributed towards funding the coaches for swimming lessons for the whole school to attend the

Christmas pantomime in Bishops Stortford, as well as purchasing TT Rockstars licence (online times table software), a new BBQ for our whole school outdoor fundraising events and equipment/resources to improve the outside space outside Copeland class.

Thank you to everyone who has contributed and continues to support the PTFA by organising, running,

attending, donating, and promoting events. Your support and involvement are appreciated!

Community Walk

Meet at the Village Hall car park at 10.30 on Bank holiday Monday 26 August. Everyone welcome including dogs.



GMS GARDEN MAINTENANCE SERVICE

Self employed Gardener 30 years in the trade



- Wisley & Capel Manor trained
- Very Reliable
- Regular Maintenance
- Grass Cutting
- Hedge Trimming
- Border Work
- Weeding
- Lawn care/treatment
- Planting
- Jet washing patios, paths & drives
- Weekly or fortnightly
- One off tidy ups
- All year round

01279 830960 07956 524586 deanm41@aol.com

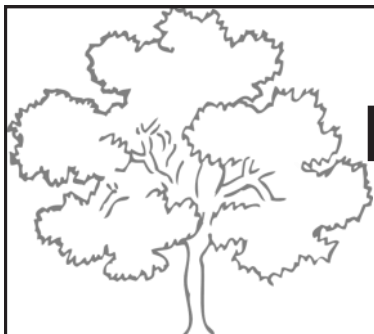
M Darby

Complete Building Services

Specialising in all kinds of brickwork
Extensions, Renovations,
Structural work, Patios & Walls,
Garage Conversions, Rendering,
Plastering, Fencing
Garden Hard Landscaping

01279 724042 07702 526462

www.mjdarbybuilding.co.uk



Essex Tree Masters

- Felling
- Crown Lifting
- Size Reduction/
- Thinning
- Dead Wooding
- Stump Grinding
- Pollarding
- Pruning
- Hedge Trimming
- Removal

07772151268

01245 231642

info@essextreemasters.co.uk

essextreemasters.co.uk

Checkatrade.com
Where reputation matters

Google
★★★★★

City & Guilds
NPTC
Qualified



Friends of St Mary's Sheering

News of the buildings and grounds Churchyard

You will no doubt have noticed in your own garden that the wet spring followed by warm weather made your lawn grow at an alarming rate. The churchyard was no exception, and it has sometimes been a struggle to keep on top of things, despite the fantastic job that Natalie Cracknell and her team do to look after it all on behalf of the community. Could you spare an occasional Saturday morning, or even a couple of hours, to help keep the grass under control? If you can't do Saturday mornings, and have your own tools, there are still opportunities to help. For more information give Natalie a ring on 734360.

Our small and mainly elderly congregation are hugely indebted to the wonderful people who help in all sorts of ways to maintain the buildings and the grounds. On 2 June we gave a thank-you tea party for the churchyard team and their families. There were loads of cakes, a few speeches, and the Brass of St Mary's entertained us afterwards.

Eco-church

A couple of years ago we came across bee orchids in the land designated for the churchyard extension - but not last year. We are delighted that they were back again this year.

Maintenance

Since our last report to Sheering News we have had a run on funds raised through Friends of St Mary's. The lightning conductor has been tested, missing and broken tiles on the church room roof have been replaced, and the mandatory five year electrical inspection has been done. Meanwhile the wet winter and spring took a toll on the carpark and it is in urgent need of repair. Unfortunately it will cost more than we currently have in hand for maintaining the buildings and grounds. We hope to raise enough funds to fix it before the winter.

Dates for your diary

Harvest Weekend, 21 and 22 September

The church will be decorated. Donated dry goods will be given to Harlow foodbank www.harlowfoodbank.org.uk, and gifts of produce will go to Streets2Homes www.streets2homes.co.uk. On Saturday afternoon there will be teas and stalls in the Church Room from 2.00 to 4.30. All welcome – do drop in! During the Sunday service at 10.30am we will be welcoming the Reception Class and their parents from Sheering school.



Friends Events

6 October 3.00 St Mary's Church Room: My Tutu Went AWOL Tea & Cake/Puddings £10

Regular Services

You are always welcome at **10.30 on Sundays***. Unlike many rural parishes these days, we are open every Sunday because we are fortunate to have members of the congregation who are authorised to lead services. (Holy Communion, however, is always led by a member of the clergy.)

* When there is a fifth Sunday in the month, we have a joint service in one of the churches of the Six Villages (Hatfield Heath, Sheering, Great and Little Hallingbury, Hatfield Broad Oak and Bush End). Watch the notice board to find out which

parish is hosting.

Church changes

Rev Dawn's retirement

On 30 June Rev Dawn led her last service in the Six Villages before she and her husband Andrew retire to the Kent coast. Many of us in the community will miss her for all the funerals, weddings

and baptisms she has conducted alongside regular services in her eight years with us. Here in Sheering we will also miss Andrew very much in his role as a member of the Fabric Committee (which oversees care of the buildings and grounds) and especially recently his expertise in obtaining the planning permission for the churchyard extension.

New Vicar

In the last edition of Sheering News we wondered who would lead our Christmas services next time. And now we know! We are delighted that Rev Sophie Weller has been appointed. The service to license her to lead the churches of the Six Villages is on Monday 23 September at 7.30 at Hatfield Broad Oak church. If you need clergy support before her arrival, visit the Sheering page of the Six Villages website www.thesixvillages.org, email the Six Villages administrator administrator@thesixvillages.org, or contact our Churchwarden Mrs Jane Potter on 07598 501623.

Organisational change

For a long time our Six Villages clergy have reported to the Area Bishop of Barking, but this year we were transferred to become part of the church "family" of the Area Bishop of Colchester. (Area Bishops report to the Bishop of Chelmsford.) See page 23 in Sheering News for Bishop Roger's "Summer letter" in which he introduces Sheering and the Six Villages to our new brothers and sisters.

Produced by Friends of St Mary's Sheering, c/o Friends secretary, 72 Crown Close, Sheering, Bishop's Stortford, Herts CM22 7NE





Marvellous Makers is coming to a library near you this summer! Essex Library Service and The Reading Agency are teaming up with Create for a very special 2024 Summer Reading Challenge which will be a celebration of the creative arts. We'll be inspiring children to express themselves in creative ways, tap into a world of imagination and storytelling and – of course – to read!

Children will join our wonderful characters, brought to life by the brilliant children's illustrator Natelle Quek, as they prepare for a big festival to show off the work they have created, inspired by their favourite reads. However, the day before the festival, some objects mysteriously go missing from their creative toolbox. The children of Essex will help our characters find these missing objects and save the festival!

The challenge runs from Saturday 20 July to Saturday 7 September in all Essex libraries and mobile libraries. There will also be a special early joiners' day on Saturday 13 July!

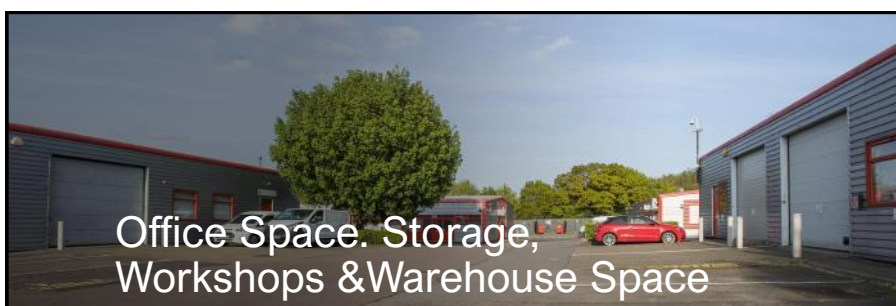
Children are being asked to read 6 books, they will collect stickers for their folder for each book they read. After reading 6 books they earn their certificate and medal.

Children can read any library book of their choice: fiction, non-fiction, picture books, books they share with parents and carers, e-books or e-audio, they all count. The under fours are not forgotten with a special version of Marvellous Makers just for them.

Individual Tuition in Person with an experienced Teacher & Learning Coach

Fun ways to learn - suited to the individual
Catch up with Reading
Primary Maths and English
Secondary English
Revision Skills

Talk through what your child needs
Linda Ainsworth 01279 734333



Office Space. Storage, Workshops & Warehouse Space

- ◆ Easy in, Easy out terms
- ◆ CCTV, 24 hour security & Gated Site
- ◆ Dedicated parking & visitor parking

Call today on
01279 429 644
for more information



Email: office@harlowbusinesscentre.co.uk
www.harlowbusinesscentre.co.uk
Harlow Business Centre, Lovet Road, Harlow CM19 5AF

DANIEL ROBINSON & SONS

Independent Family Funeral Directors & Monumental Masons

Est 1892

Always here when you need us...

- Arrangements in the comfort of your own home, if preferred
- Private Chapels of Rest
- Pre-paid funeral planning services
- Traditional & contemporary funerals to suit your wishes



79/81 South Street
BISHOP'S STORTFORD
01279 655477

3 Bullfields
SAWBRIDGEWORTH
01279 722476

Wych Elm
HARLOW
01279 426990

enquiries@drobinson.co.uk
www.drobinson.co.uk

New Travel Routes for Harlow

Harlow & Gilston Garden Town is officially underway with work having started on two new public travel routes for the local area.

The first phase of a Sustainable Transport Corridor between the Town Centre and Burnt Mill roundabout began construction earlier this year and will prioritise walking, cycling and bus services.

Funded through a £171 million Housing Investment Grant from Homes England, the route will run from the Town Centre and along the A1019/Velizy Avenue to a redesigned junction at Burnt Mill, before connecting to the future Garden Town villages in Gilston.

This work is programmed to be completed before Christmas 2025.

HGGT Director, Naisha Polaine, said: “Work beginning on the Sustainable Transport Corridor network is a huge moment for the Harlow & Gilston Garden Town project and is the start of our commitment to give residents more travel options for the future. Ever since Government gave Harlow and Gilston the status of a Garden Town project in 2017, HGGT’s five council partnership has



been very clear on the objectives for transport across the local area and that’s providing alternatives to using cars for local journeys.

“The new route will give priority to walking, cycling and buses, creating a culture of active travel that’s quick, safe and good for the environment while generating a healthier population.”

Continuing the Garden Town partnership’s commitment to active travel, work has also begun on a dedicated route for walking, cycling and wheeling from Elizabeth Way along Fourth Avenue.

It will run towards the hospital before incorporating Hamstel Road, Hodings Road and through an elevated section at Sainsbury’s to Nettleswell.

Thanks to Essex County Council’s £5m Active Travel Fund award from Government, the route is part of the Garden Town’s wider Local Cycling and Walking Infrastructure Plan (LCWIP).

Also included in both the LCWIP and funding award is the design of a future walking and cycling path connecting Post Office Road to Sheering Road.

Sheering residents can attend free adult cycling training courses, teaching people the basics of riding a bike and travelling safely.

Log onto tinyurl.com/CycleHarlow to book.

Could you volunteer for Community Speedwatch in Sheering or Lower Sheering?



A number of people have trained recently but we urgently need more volunteers.

Community Speed Watch conduct local traffic speed monitoring and are supported by the Safer Essex Roads Partnership and partners. It is delivered by volunteers within their own communities, aiming to improve road safety.

Volunteers are trained by the Safer Essex Roads Partnership, including roadside training, are provided with equipment and are supported by a Community Speed Watch Co-ordinator and Essex Police.

Volunteers monitor speed of passing

vehicles with handheld devices which are recorded and passed to Essex Police to take further action from letters to additional police enforcement.

If you would like to read more about what Community Speed Watch do or join as a volunteer, visit the Safer Essex Roads Partnership website. saferessexroads.org/

Contact the clerk Siobhan Perrin 07821 894235 in office hours or email clerk@sheeringparishcouncil.gov.uk



Local company providing all digger work, digger hire,
ground work, muck away.

Competitive prices no job too small.

GH PLANT

Survey * Build * Digger Hire

George Harding 07843 777576
ghplant.co.uk



novuscare

Care in the Heart of your Own Home

If you are looking for extra care and support
for a loved one in Essex then our local carers can help.

Novus Care is regulated by the Care Quality Commission
and can provide a qualified, experienced carer to support
your loved one in the comfort of their own home from
just 30 mins per week to full-time live in care.



For more information or to arrange a free assessment, please contact the Novus Care Team on:

T: 01268 960285 | **E: hello@novus-care.com** | **W: novus-care.com**

To advertise here
send copy to
sheeringnews@
sheering.org.uk or
phone Linda on
01279 734333

This size just £24 for
3 issues

MR | EDGE

✓ALL MY WORK AND PLANTS GUARANTEED

- ✓ Planting
- ✓ Pruning
- ✓ Cutting
- ✓ Reduction
- ✓ Removal
- ✓ Tree work
- ✓ Weed Suppression
- ✓ Garden Maintenance

and much much more...

For a **FREE QUOTE** from a nice man
Ring Tony ANYTIME on
07771 807641



Jill's Mobile Hairdressing

Top Salon Trained
NVQ Level 3

07469 962434

Find us on Facebook

Lower Sheering Recycling Bags

Is there
anyone in
Lower Sheering willing to
store recycling bags for
residents to collect in case
they run out.
Please contact Sheila
Caves 01279 725578



RECYCLING and WASTE Epping Forest District Council

Green Bin - Every Week

Food Waste: All cooked and uncooked food waste including:
bread, cakes, biscuits and pastries; dairy products; coffee
grounds and teabags; fruit and vegetables; meat and fish
(including bones);

Garden Waste: branches; cuttings; dead flowers; grass and
leaves; house plants; twigs; weeds; vegetarian pet hutch waste;
shredded paper

Blue Box Glass bottles and jars

Bin of Last Resort - Black Bin Fortnightly: Domestic household
rubbish

Polystyrene: Leave by the black wheelie bin

Clear Sacks - Fortnightly : Paper, shredded paper; card, tins,
cans, plastic bottles, plastic tubs and pots, food trays; plastic
bags; aerosols; clean foil and foil containers, food and drink
cartons (tetra-paks); Please tie your recycling bags, and flatten
your boxes. These sacks cannot be used for any other waste.
Should these be found in your refuse bin or any other container
this may be classed as contamination and may cause delay or
even refusal of your waste collection.

As well as using clear recycling sacks, you can also put recycling
in cardboard boxes and other clear sacks that are transparent.
Any recycling in a carrier bag or a bag not transparent will not be
collected

Clear sacks available from:

- ◆ Sheering Newsagent & Post Office.
- ◆ The Shed Coffee House The Maltings Station Road Lower
Sheering CM21 9JX

For more information contact 01992 564608
eppingforestdc.gov.uk

LUXURY TOILET HIRE

Toilet Trailers
Luxury and Party range
Single Event

Portable & Disabled units available
for hire

Effluent & Liquid Waste Removal (cesspits etc)
01279 504638 0800 1123062 01371 871871
for a competitive quote
www.luxurytoilethireltd.co.uk



St Mary's Parish Church, Church Lane, Sheering

A service in church every Sunday at 10.30

Whenever there is a fifth Sunday in the month, watch the notice board for the venue and time of a joint service in one of the other parish churches of the Six Villages (Hatfield Heath, Great and Little Hallingbury, Hatfield Broad Oak and Bush End).

www.thesixvillages.org



Bishop Roger writes:



Holidays

I have just finished an enjoyable and intense period of getting to know the clergy and churches of the Harlow Deanery. This included a number of visits to the Six Villages and a delightful evening at the Cock Inn in Sheering (thanks to Bill and Cheryl Bedford).

Now, as the summer holidays approach, it makes sense to reflect on the idea of holiday and recreation, especially in a group of villages that frame an ancient place of recreation – Hatfield Forest. The forest was once a medieval hunting ground and then became a more general attraction for all kinds of people. The National Trust still boast that, 'whether you want somewhere for the children to run off energy or a place for quiet reflection, you will find your own special place in Hatfield Forest.' Of course, also nearby is Stansted Airport which serves over 27 million passengers a year. Many people will be heading off on their summer holiday from Stansted.

Holidays are a great time of year. Normal rules are suspended; you can get up when you like, go to bed when you like and, to some extent, you can do whatever you like. It is a time for living expansively, for exploring new places, for doing things you've never done before and

for experiencing new things. It is a time for enjoying this world and everything in it.

That's what the old biblical idea of Sabbath is all about. The Bible talks about how God made the world and then, on the Sabbath, he rested - not because he was exhausted, but because he wanted to enjoy the world that he made. There's one bit in the Bible (Psalm 104 – like an old song) that talks about this huge fish called a Leviathan and the idea was that, on the Sabbath, God played with the huge fish for sport.

That's what Sabbath (the 'holy' day or holiday) is all about; enjoying this world, living expansively, exploring new places, doing things you've never done before and experiencing new things.

When I was a teenager, we always knew that it was holiday time because a programme would come on called 'Why Don't You?' which had a song that asked, 'Why don't you just switch off your television set and go out and do something less boring instead?' The idea was that they'd then give you some ideas of what to do. You see, the danger is that we spend all our time with a glass screen between us and the world - whether it's a phone screen or a computer screen or the TV. And we miss out on experiencing all that this world has to offer. Why don't we just switch off our television set – our computer – our phone - and go out and

do something less boring instead?

This coming summer gives each of us a chance to live expansively, to explore new places, to do things we've never done before and to experience new things.

Christians believe that God blessed these times of sabbath rest and consecrated them. They are genuinely holy days (holidays) in which we glimpse something more of the abundant grace and generosity of God.

So whether you are popping to the Forest, catching a plane or just enjoying a very brief respite from the busyness of life (particularly if you are involved in agriculture and therefore this is a hectic time), then I hope that it will be a time of true re-creation. A time in which you can learn the unforced rhythms of grace.

David Kundtz wrote a book called 'The Art of Stopping' and he talks about 'creating enough space in your life, whether for thirty seconds or forty days, to make sure that you have first things first, that you are not so distracted that you lose the moments of meaning in life, whatever else you may be in the process of gaining'.

That is why we need a holiday.

May this summer give you joy and refreshment and rest for your soul.

Rt Rev'd Roger Morris, Area Bishop of Colchester

USEFUL NUMBERS, E-MAIL & WEBSITE ADDRESSES
BRIDGE CLUB June Whitbread 01279 651234 or Alan Draper 01279 656255
CAB Harlow 0845 120 3717 www.adviceguide.org.uk
DISTRICT COUNCILLORS RURAL EAST Richard Morgan cldr.morgan@eppingforestdc.gov.uk Raymond Balcombe cldr.rbalcombe@eppingforestdc.gov.uk Ian Hadley cldr.ihadley@eppingforestdc.gov.uk
ECC COUNCILLOR Christopher Whitbread cldr.christopher.whitbread@essex.gov.uk
ECC County Hall 01245 492211 www.essexcc.gov.uk
ECC TRADING STANDARDS HOTLINE 0845 6044466
EFDC 01992 564000 www.eppingforestdc.gov.uk
Epping Forest Countrycare visiteppingforest.org/explore/countrycare
FLYTIPPING EFDC 01992 564608 erefuse@eppingforestdc.gov.uk
FRIENDS OF PISHIOBURY PARK friendsofpishioburypark.co.uk
FOOTBALL CLUB Mr C Hellmers 01279 653923
HARLOW ADULT EDUCATION 01279 427711
HARLOW PLAYHOUSE www.playhouseharlow.com 01279 431945
HIGHWAYS 0345 6037631 www.essexhighways.org
MEALS ON WHEELS 0345 6037630 (low cost number)
MP Chris Vance chris4harlow@gmail.com
PARISH COUNCIL CLERK clerk@sheeringparishcouncil.gov.uk
PARISH COUNCIL WEBSITE sheeringparishcouncil.gov.uk
POLICE Leanne.archer@essex.police.uk (Inspector) Elliot.Harris@essex.police.uk (Beat Officer) 24 hour non-emergency number 101 Ongar Police Station ext.319333 Eppingforestcommunitypolicingteam@essex.police.uk
POWERCUTS 105
PRE-SCHOOL Caroline Humphreys 07949 486093 sheeringvillagepreschool.co.uk
PRINCESS ALEXANDRA HOSPITAL 01279 444455
RIVERS HERITAGE SITE & ORCHARD www.rhso.co.uk
SAWBRIDGEWORTH LOCAL HISTORY SOCIETY sbwhistory.com/
SHEERING ONLINE & SHEERING NEWS MAGAZINE www.sheering.org.uk sheeringnews@sheering.org.uk
SHEERING POST OFFICE 01279 734204
SHEERING SCHOOL 01279 734210 admin@sheering.essex.sch.uk CM22 7LU
STANSTED AIRPORT Noise Complaints 0800 243788
ST CLARE HOSPICE www.stclare-hospice.org.uk 01279 773700 GRIEFLINE 01279 945089
ST MARY'S CHURCH CM22 7NR www.thesixvillages.org , administrator@thesixvillages.org Churchwarden Mrs Jane Potter 07598 501623
ST MARY'S CHURCHYARD MAINTENANCE TEAM Natalie Cracknell 01279 734380 or 07907 838860
TALKING NEWSPAPER Richard Barnett 01279 651270 familybarnett24@hotmail.com
U3A John Dickenson 01279 722297
VICTORIA HALL THEATRE www.victoriahalltheatre.co.uk
VILLAGE HALL Bookings: 07396 703119 bookings@sheeringvillagehall.org sheeringvillagehall.org info@sheeringvillagehall.org VILLAGE HALL CM22 7LX
WOMEN'S INSTITUTE Irene Harriss 01279 734334

SHEERING NEWS

reaches over 1500 homes
in Sheering and Lower Sheering
3 times a year

Sheering News welcomes copy from any local organisation or residents who have information to pass on.

All contributions and adverts for the next issue should be sent to:

Linda Ainsworth
Sheering News
The Willows The Street Sheering
Bishop's Stortford CM22 7LX
sheeringnews@sheering.org.uk

Deadline for next issue

➡ 1 November
Publication date
for next issue
December 2024 ⬅

Sheering News Editorial Team

Linda Ainsworth (Editor)	01279 734333
Sheila Caves	01279 725578
Iris Filisetti	07879 446459
Irene Harriss	01279 734334
Sheila King	01279 831971
Janet Whitehead	01279 734380

The editorial team of *Sheering News* does not necessarily agree with the views and opinions expressed in articles printed in the magazine and accept no responsibility in respect of goods and services advertised.

SHEERING NEWS ADVERTISING RATES

Page size	B/W	Colour
Full 1 issue	£100	£200
1/2 1 issue	£60	£120
1/2 3 issue	£150	£300
1/4 1 issue	£30	£60
1/4 3 issues	£80	£150
2/12 3 issues	£60	-----
1/12 3 issues	£30	-----

Send copy, with payment to:
sheeringnews@sheering.org.uk or the
address above.